

NJ COUNCIL FOR THE HUMANITIES

28 WEST STATE STREET, SIXTH FLOOR

TRENTON, NJ 08608

609.695.4838

NJCH.ORG

MISSION AND VISION

At the New Jersey Council for the Humanities, we harness the power of the humanities to strengthen our pluralistic society.

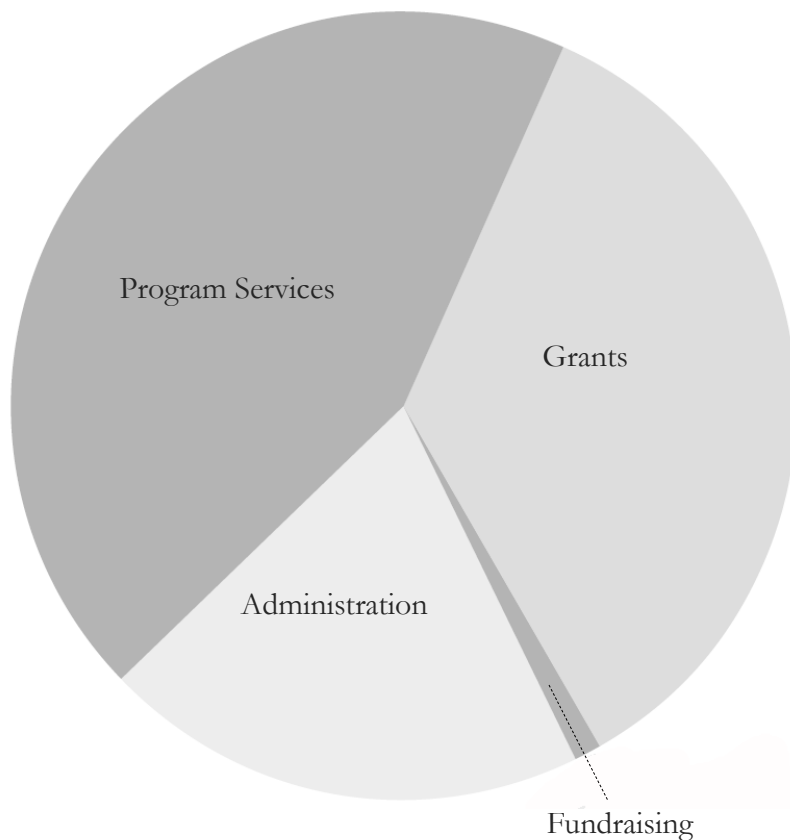
Our vision is a New Jersey that delights in diversity, appreciates that there are no easy answers, and finds joy and understanding in the humanities.

HOW DO WE WORK?

By enabling public programs and humanities experiences that deepen our understanding of ourselves and our world.

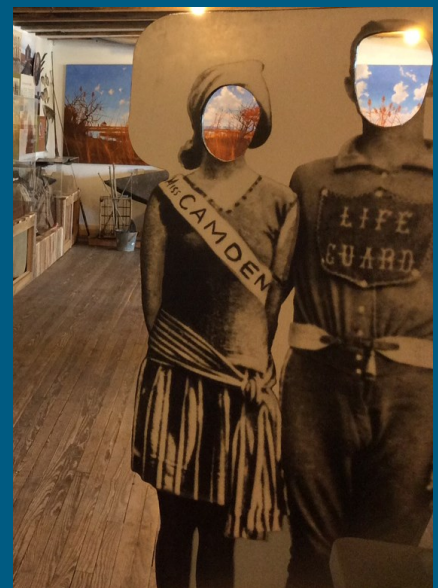
NJCH is a grantmaker, program provider, partner, convener, and innovator. We work with statewide and community organizations to bring dynamic programming to the local level.

FY15 FUNCTIONAL EXPENSES



Untitled (Swedesboro)
2015, Paper collage, Casey Ruble

Everything that Rises, an exhibition and public program series at the Visual Arts Center of New Jersey, utilized the artwork of Casey Ruble to generate dialogue on race relations in the U.S. The artist creates contemporary images of local sites with historical connections to the Underground Railroad and the Civil Rights Movement. The project received support from a NJCH Major Grant.



Play on the Bayside, an exhibition and public program series at the Bayshore Center at Bivalve explored how work and play are closely intertwined with each other in New Jersey's Delaware Bayshore. The project received support from a NJCH Major Grant.

Impact Report for the Honorable Donald Payne Jr.

Congressional District 10

NJCH At-A-Glance

	2016	2014-2016
Council Investment	\$102,656	\$269,171
Partner Contributions	\$415,843	\$956,324
Events	76	257
Audience	17,447	82,080
Communities	10	12

“ NJCH has been our longstanding partner in making sure creative and rigorous thinking – in the best humanities tradition – is done for and with communities desiring a robust cultural infrastructure, yet too often underserved by academic institutions. ”

Mark Krasovic
Interim Director
Clement A. Price Institute
Rutgers University - Newark

Where We Are

Statewide Programming



Each marker was the site of at least one NJCH-funded event.

District 10 Program Partners

New Jersey Theatre Alliance • Newark Museum Association • Newark Public Library • The Moving Architects • Bayonne High School • Bloomfield College • Daughters of Israel • Durand-Hedden House and Garden Association • East Orange Public Library • Gallery Aferro • Glen Ridge Public Library • Hackensack University Medical Center • Historical Society of Bloomfield • Hudson County Community College • Hudson County, Office of Cultural & Heritage Affairs • Kean University ManorCare Health Services • Maplewood Memorial Library • Montclair Historical Society • Morristown Medical Center • Mountainside Hospital • Princeton Care Center • Roselle Park Veterans Memorial Library • Rutgers New Jersey Medical School • Rutgers University-Newark • Seton Hall University • Soaring Heights Charter School • The Lennie Pierro Memorial Arts Foundation • VA New Jersey Healthcare System • West Orange Public Library • YM-YWHA of Union County

*Where We Are data represents three years of programs